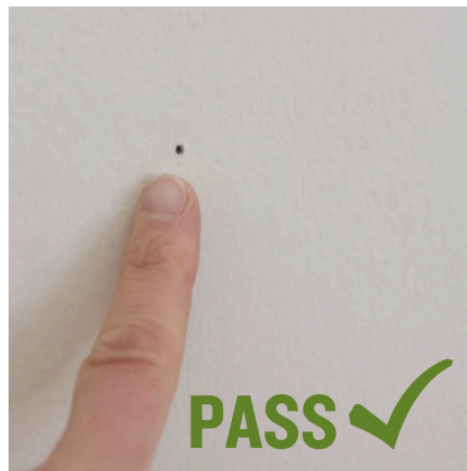


What is deteriorated paint?

If you have a crack in your paint that's bigger than a hairline crack or a nail hole, it means the paint is damaged. This will stop you from getting a "Lead Safe" certificate.

Look at our list of examples to see what kind of cracks we're talking about.



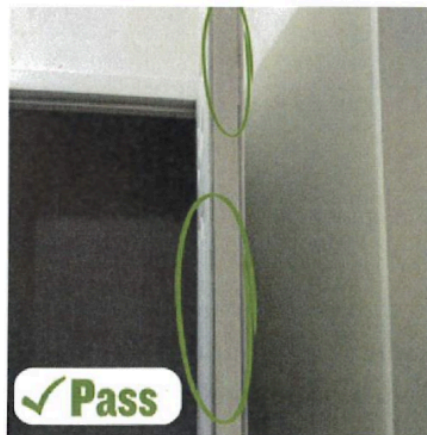
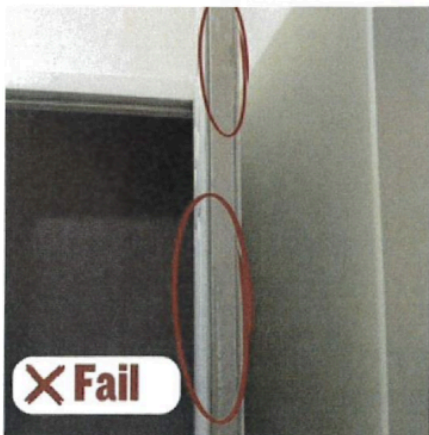
Our inspectors will need to check every part of your rental unit that a tenant can use. This includes laundry rooms, utility closets, and common areas.

If we can't get into a part of the unit that we're supposed to check, we'll have to cancel the inspection. You won't get your money back.

If you have any questions before the inspection, please call us.

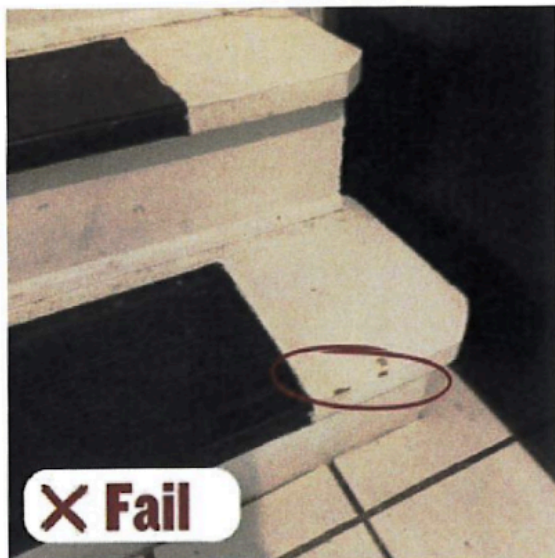
Doorways

Check the door frame for cracks, peeling paint, or bubbles. Pay extra attention to the parts of the door that get used a lot, like around the handle.



Stairs

Look for places where the paint is chipped or peeling. If you have carpet on your stairs, check where the carpet meets the wall. If your banisters are painted, make sure they're not damaged.



Windows

Check the window sills for cracks, peeling paint, or bubbles. Pay extra attention to the inside part of the window frame.



Construction Areas

If you did any painting or repairs before a new tenant moved in, make sure everything is clean. Check window sills, stairs, floors, door frames, and any other places a tenant can touch.

Use a wet baby wipe to see if surfaces are clean. If the wipe has dust on it, you might fail the inspection.



If there's a lot of dust and debris in the window sills, it might contain dangerous lead dust. **This could cause you to fail the inspection. We only check the window sills, not the area below the window.**



A little dust and cobwebs are okay. But if you find construction dust or debris, that's a problem because it might contain lead.



Visible Construction/Remediation Dust

Cobwebs and mild dust accumulation between routine cleanings will NOT result in a failure. Our inspectors are looking for areas with construction/remediation dust and debris which often contain hazardous lead particles.

